

The Visible Hand of God

- KCBS 2023 •
Tuesday



Objectives:

- 1) To investigate the reasons that we believe.
- 2) To solidify our faith by a recognition of the hand of God in the present.

Day	Topic	Biblical Case Study
Monday	Why we believe, exploring doubt	Help thou my unbelief
Tuesday	Our 'privileged' planet	Angels in the hills
Wednesday	Fearfully & Wonderfully made	Is anything too hard?
Thursday	Witness to the defense: Israel	Blind Witnesses
Friday	Our hope in the resurrection	Blessed are those that...

Tuesday

– Our Privileged Planet

Slides – scan QR code

KCBS 2023



In the beginning God created...



What do angels do?

1. Interest in repentance

Luke 15:10 - "there is joy in the presence of the angels of God over one sinner that repenteth"

2. Interest in redemption

1 Peter 1:12 - "which things the angels desire to look into"

3. Interest in mankind: protection, comfort, etc.

Luke 22:43 - "appeared an angel from heaven strengthening him."

Psalms 34:7 - "encampeth round about them that fear him"

Heb 1:14 - Are they not all ministering spirits, sent forth to minister for them who shall be heirs of salvation?

Action	Scripture
Create, Design, Make	Genesis 1&2
Representative/Voice of God	Exodus 23:20-21
Protect/Save	2 Kings 6:8-23, Psalm 34:7
Destroy	Exodus 12:29, 2 Kings 19:25
Help, Comfort, Encourage	Genesis 16:10-12, Matthew 4:11, Luke 22:43
Manipulate world events	Daniel 10:11-13, Job 1:6-12
Rejoice, sing, praise	Luke 2:10-14, Luke 15:7

Angelic Ranking: **Captain of the Host**

Joshua 5:13-14 – When Joshua was by Jericho, he lifted up his eyes and looked, and behold, a man was standing before him with his drawn sword in his hand. And Joshua went to him and said to him, “Are you for us, or for our adversaries?” And he said, “No; but I am **the commander of the army of the LORD.**



Angelic Ranking: Captain of the Host → Guardian in Wilderness

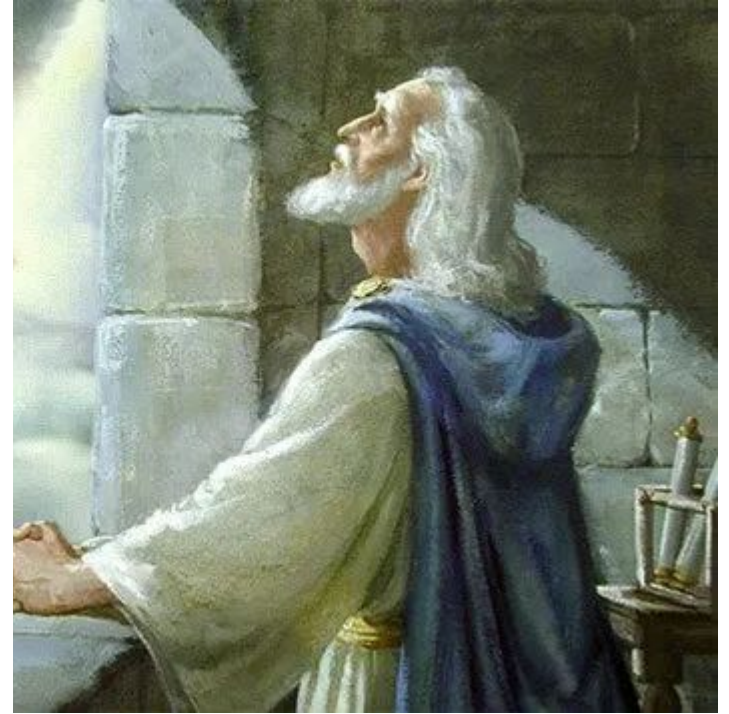
Exodus 23:20-23 - Behold, I send an angel before you **to guard you on the way...** Pay careful attention to him and obey his voice... **for my name is in him...** carefully obey his voice and do all that I say, then I will be an enemy to your enemies and an adversary to your adversaries.



The LORD went before them.
(Exodus 13:21) NKJV #Faith2day

Angelic Ranking: Captain of the Host → Guardian in Wilderness → **Michael?**

Daniel 10:13 – However, the prince of the kingdom of Persia opposed me for twenty-one days. Then **Michael, one of the chief princes**, came to help me, for I had been left there with the kings of Persia.



Translations of Angels

H4397 - מַלְאָכִים

mal'âk

From an unused root meaning to despatch as a deputy; **a messenger**; specifically of God, that is, an angel (also a prophet, priest or teacher): - ambassador, angel, king, messenger.

Total KJV occurrences: 213

- Note: Genesis 16:7

G32 - ἄγγελος

aggelos

From ἀγγέλλω aggellō (probably derived from G71; compare G34; to bring tidings); **a messenger**; especially an “angel”; by implication a pastor: - angel, messenger.

Total KJV occurrences: 186

- Note: Matthew 1:20

Dissertation on Elohim

Gen 1:26 - And God said, Let us make man in our image, after our likeness...

H430 - אֱלֹהִים
'ēlôhîym

Plural of H433; gods in the ordinary sense; but specifically used (in the plural thus, especially with the article) of the supreme God; occasionally applied by way of deference to magistrates; and sometimes as a superlative: - **angels**, X exceeding, God (gods) (-dess, -ly), X (very) great, judges, X **mighty**.

Dissertation on **Elohim**

Gen 1:26 - And God said, Let us make man in our image, after our likeness...



Plural Noun



Plural Verb

The use of both singular and plural verbs in relation to this plural noun is significant. It indicates that though the Elohim are many, and united as one, they also are capable of independent decision and action. Nevertheless, the power they exercise, and the glory they manifest are from One, even Yahweh.

H.P. Mansfield, Genesis Expositor

TIFFANY & Co.



JPMORGAN CHASE & Co.



Dissertation on Elohim

- Gen. 3:22 - And the **LORD God** said, Behold, the man is become as one of **us**...
- Gen 11:6 And the **LORD** said, Behold, the people is one, and they have all one language; Go to, let **us** go down,
- Isa. 6:8 - Also I heard the voice of the **Lord**, saying, Whom shall I send, and who will go for **us**?

The man could not become as one of the Trinity; but he could become as one of the angels, for it is obvious that they gained their present exalted status through probation.

H.P. Mansfield, Genesis Expositor

Dissertation on Elohim

Psalm 103:20-21 - Bless the LORD, ye his angels, that excel in strength, that do his commandments, hearkening unto the voice of his word. Bless ye the LORD, all ye his hosts; ye ministers of his, that do his pleasure.

Case Study

Angels in the Hills

2 Kings 6:8-23

And Elisha prayed, and said, LORD, I pray thee, open his eyes, that he may see. And the LORD opened the eyes of the young man; and he saw: and, behold, the mountain was full of horses and chariots of fire round about Elisha.

Case Study - Angels in the Hills

Faith requires Prayer



Case Study - Angels in the Hills



Fear not: for they that *be* with us *are*
more than they that *be* with them.
- 2 Kings 6:16

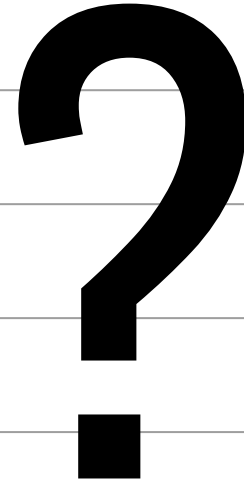


Fear ye not, stand still, and see the
salvation of the LORD
- Exodus 14:13

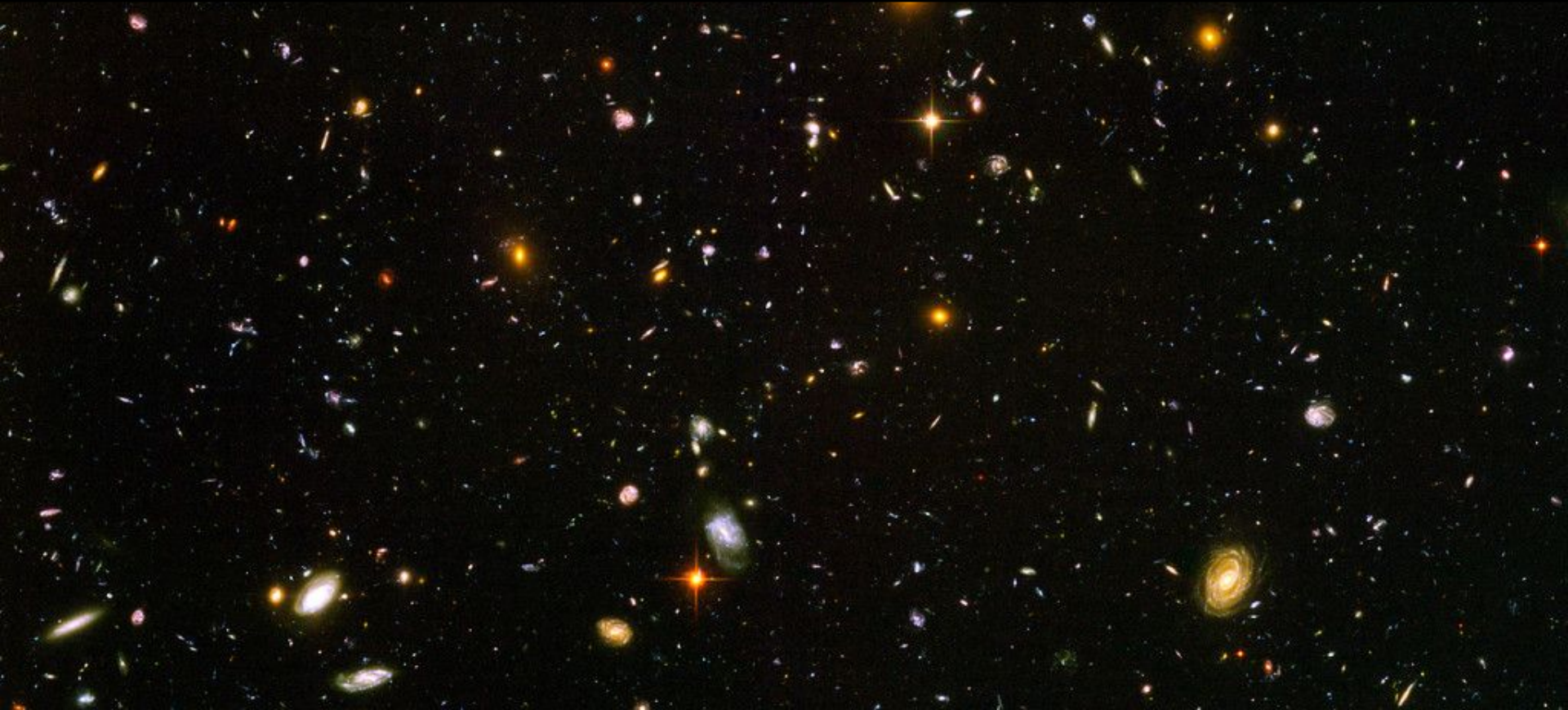
Luke 20:35-36 – But they which shall be accounted worthy to obtain that world, and the resurrection from the dead, neither marry, nor are given in marriage: Neither can they die any more: **for they are equal unto the angels**; and are the children of God, being the children of the resurrection.

“Children of the Resurrection” = Saints

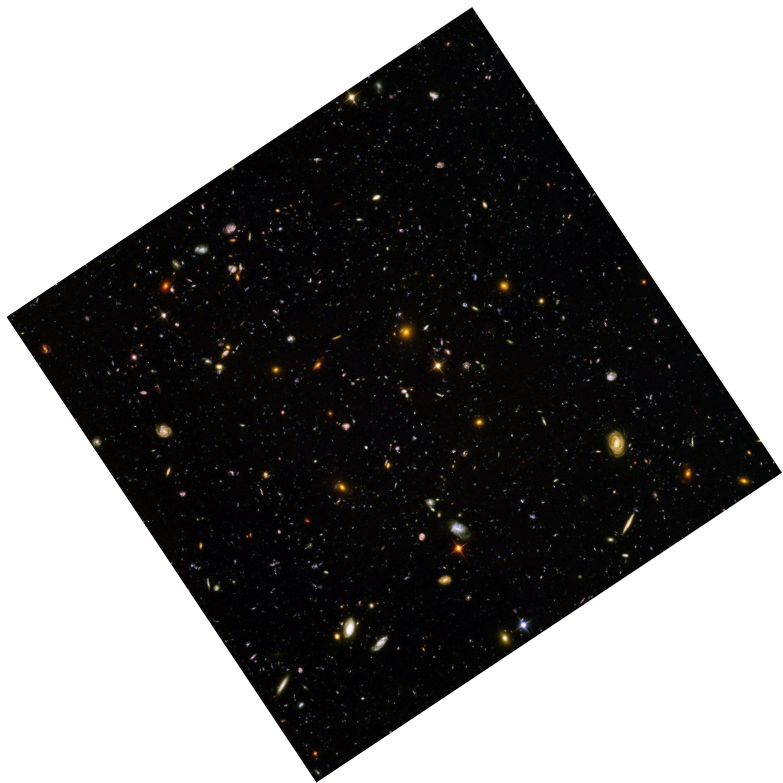
Action	Scripture
Create, Design, Make	
Representative/Voice of God	
Protect/Save	
Destroy	
Help, Comfort, Encourage	
Manipulate world events	
Rejoice, sing, praise	



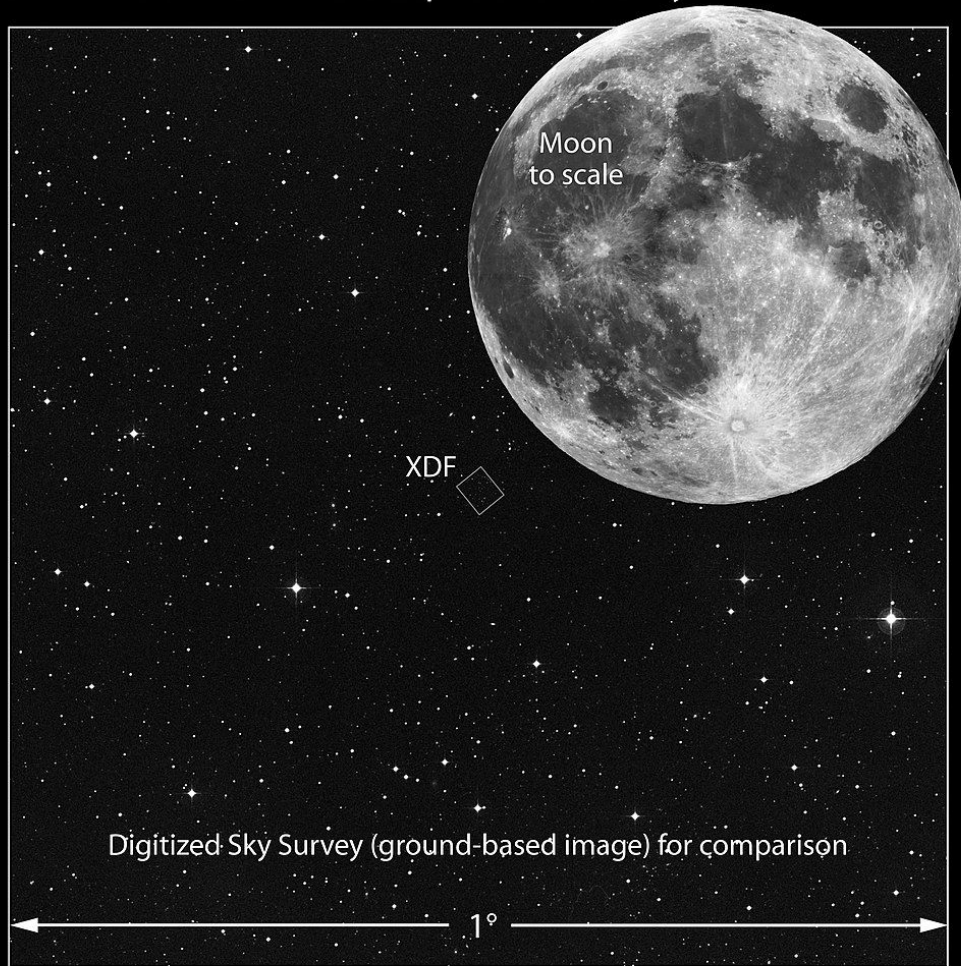
Heb 11:3 (ESV) By faith we understand that the universe was created by the word of God, so that what is seen was not made out of things that are visible.



- 10,000 galaxies
- ~200 billion stars/galaxy
- 1/26,000,000 of sky



Size of Hubble eXtreme Deep Field on the Sky



NASA's **James Webb Space Telescope** has delivered the deepest and sharpest infrared image of the distant universe so far. Webb's First Deep Field is galaxy cluster SMACS 0723, and it is teeming with thousands of galaxies – including the faintest objects ever observed in the infrared.

Webb's image is approximately the size of a grain of sand held at arm's length, a tiny sliver of the vast universe. The combined mass of this galaxy cluster acts as a [gravitational lens](#), magnifying more distant galaxies, including some seen when the universe was less than a billion years old. This deep field, taken by Webb's [Near-Infrared Camera](#) (NIRCam), is a composite made from images at different wavelengths, totaling 12.5 hours – achieving depths at infrared wavelengths beyond the Hubble Space Telescope's deepest fields, which took weeks.

This image shows the galaxy cluster SMACS 0723 as it appeared 4.6 billion years ago, with many more galaxies in front of and behind the cluster. Much more about this cluster will be revealed as researchers begin digging into Webb's data. This field was also imaged by Webb's [Mid-Infrared Instrument](#) (MIRI), which observes mid-infrared light.



Stress testing Λ CDM with high-redshift galaxy candidates

[Michael Boylan-Kolchin](#) 

Nature Astronomy **7**, 731–735 (2023) | [Cite this article](#)

8409 Accesses | 6 Citations | 244 Altmetric | [Metrics](#)

Abstract

Early data from the James Webb Space Telescope (JWST) have revealed a bevy of high-redshift galaxy candidates with unexpectedly high stellar masses. An immediate concern is the consistency of these candidates with galaxy formation in the standard Λ CDM cosmological model, wherein the stellar mass (M_*) of a galaxy is limited by the available baryonic reservoir of its host dark matter halo. The mass function of dark matter haloes therefore imposes an absolute upper limit on the number density $n(>M_*, z)$ and stellar mass density $\rho_*(>M_*, z)$ of galaxies more massive than M_* at any epoch z . Here I show that the most massive galaxy candidates in JWST observations at $z \approx 7-10$ lie at the very edge of these limits, indicating an important unresolved issue with the properties of galaxies derived from the observations, how galaxies form at early times in Λ CDM or within this standard cosmology itself.

When I look at your heavens, the work of
your fingers, the moon and the stars,
which you have set in place, **what is man**
that you are mindful of him, and the son
of man that you care for him?

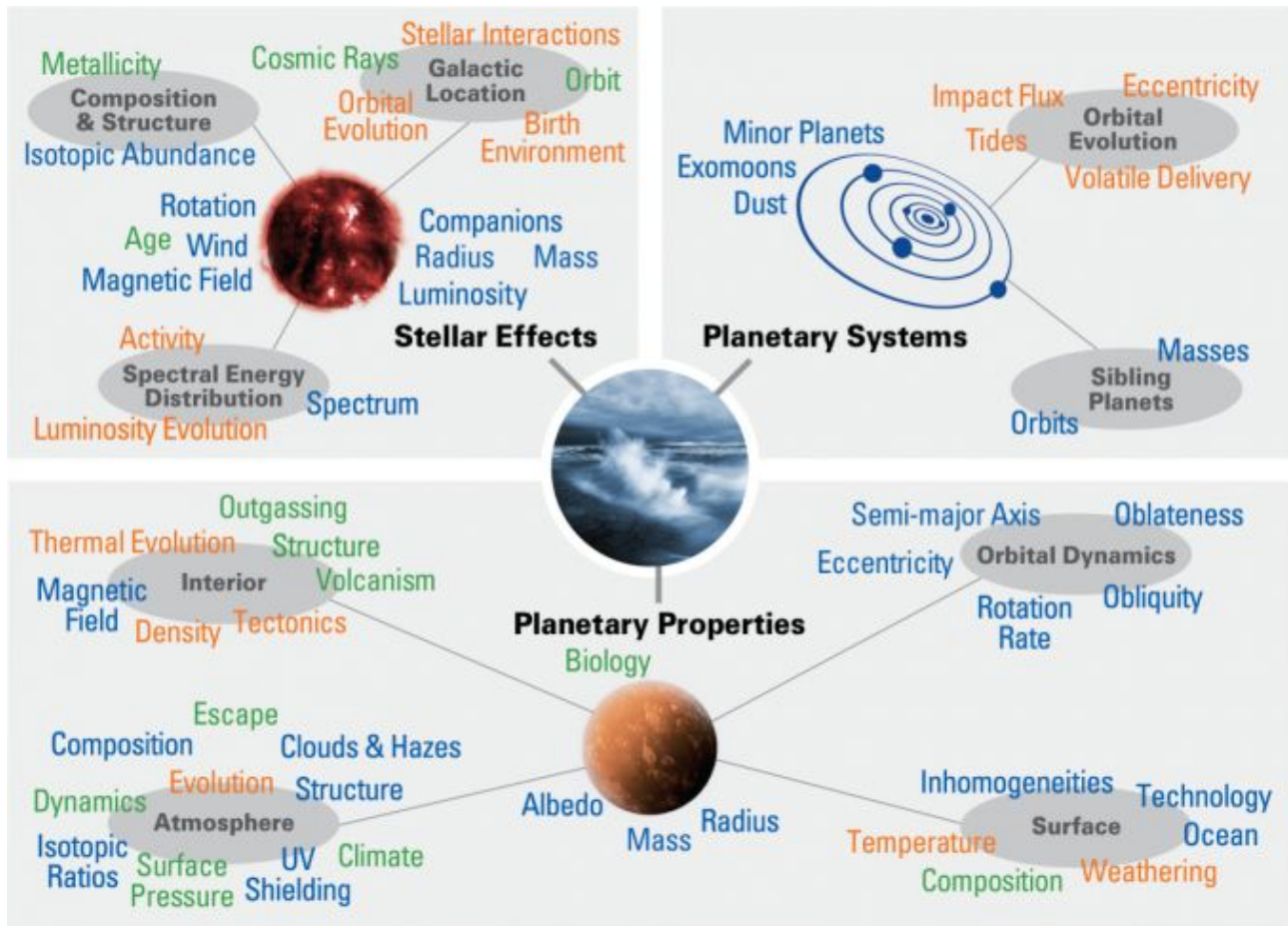
Psa 8:3-4 ESV

The heavens declare the glory of
God; and the firmament sheweth his
handiwork.

Psalm 19:1

What is God's
handiwork?

Habitability



For thus saith the LORD that created the heavens; God himself that formed the earth and made it; he hath established it, he created it not in vain, **he formed it to be inhabited:** I am the LORD; and there is none else.

Isaiah 45:18

The Natural World: Past

Genesis 1&2 describe God's ideal

The environment:

- had purpose
- was to be protected by humans
- worked in harmony
- was beautiful and free from harmful organisms



Bro. Phil Walker -
"Times of
Restitution"

Logical Design!

Factors needed to support complex life:

- Correct Location in Galaxy
- Correct Distance from Sun
- Protected by Giant Planets
- Correct Type of Star
- Large Moon
- Terrestrial Planet
- Plate Tectonics
- Magnetic Field
- Oxygen-Rich Atmosphere
- Liquid Water



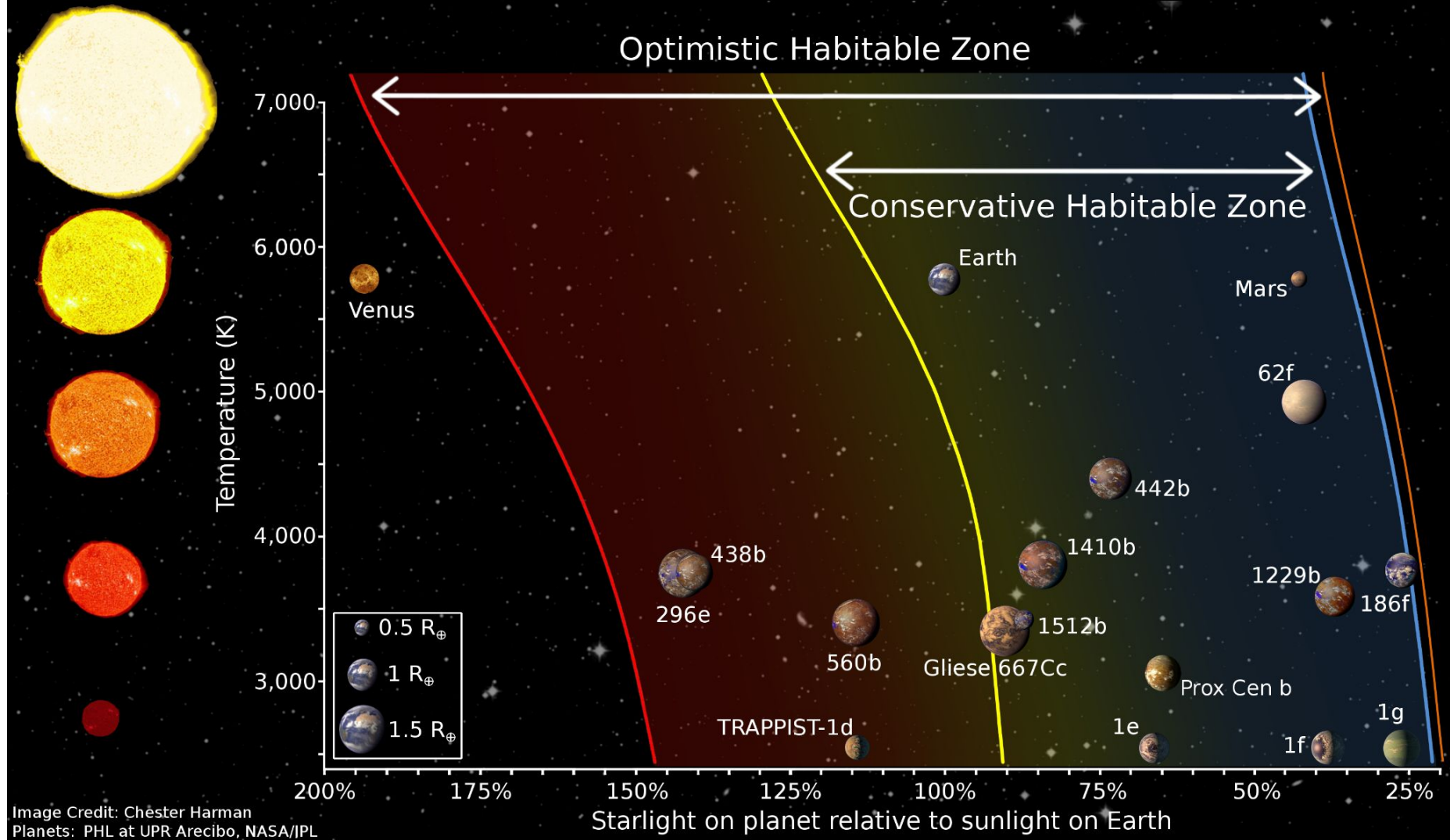


Image Credit: Chester Harman
 Planets: PHL at UPR Arcibo, NASA/IPL

God's Handiwork

Factor for Life:

Plate Tectonics

→ Habitability

→ Earthquakes

→ Source of Historical Data

→ Pillar of Proof

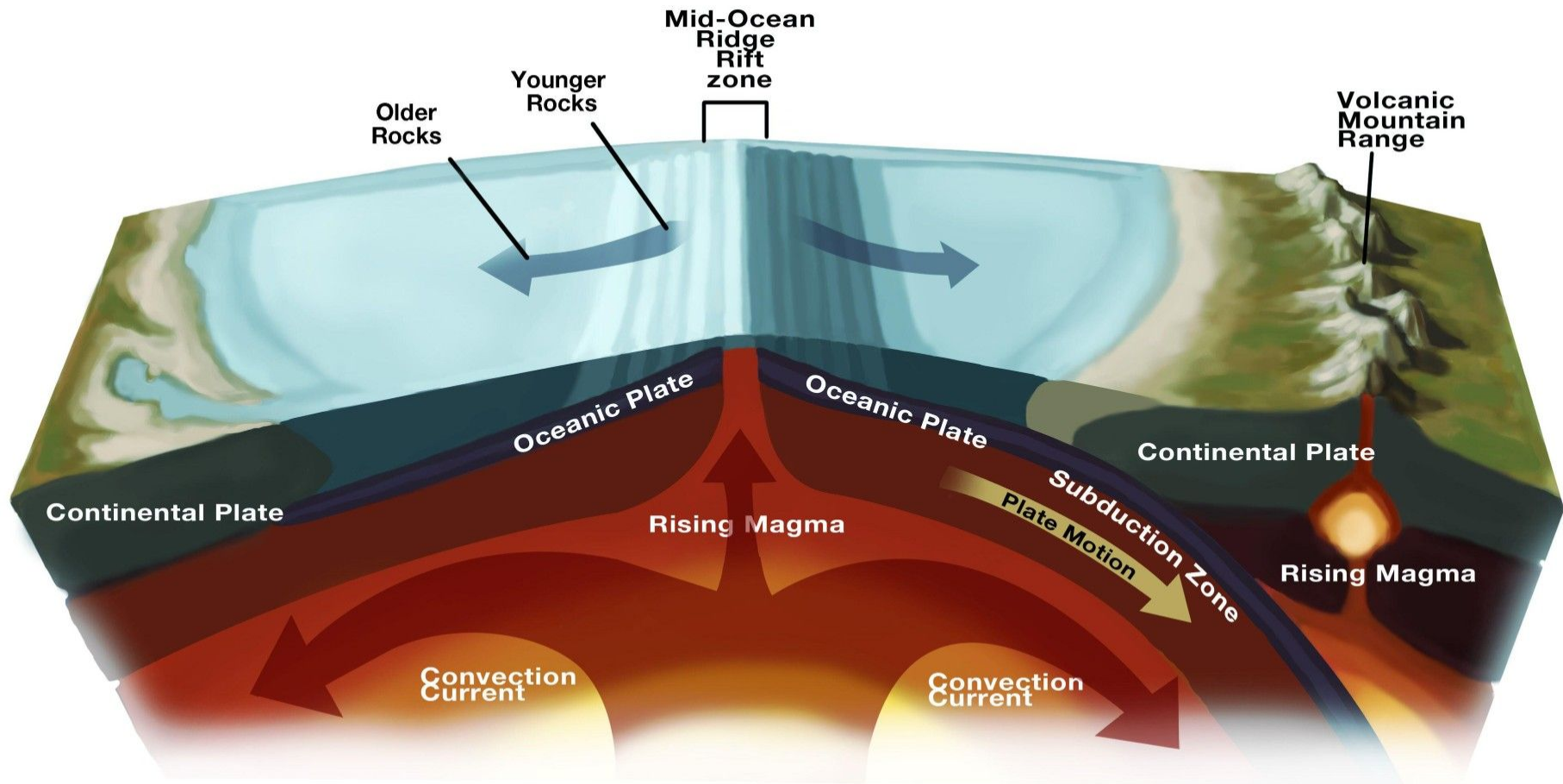


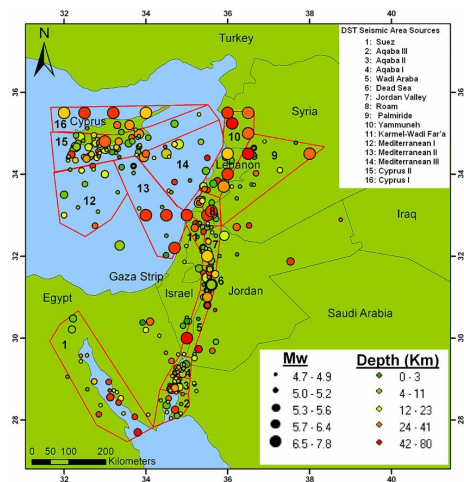
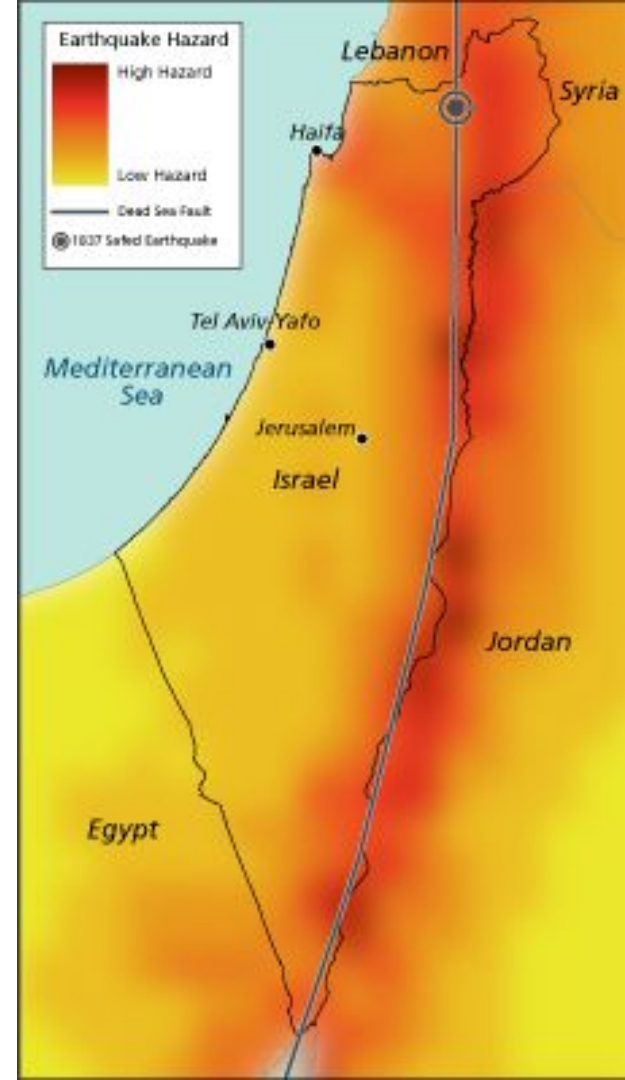
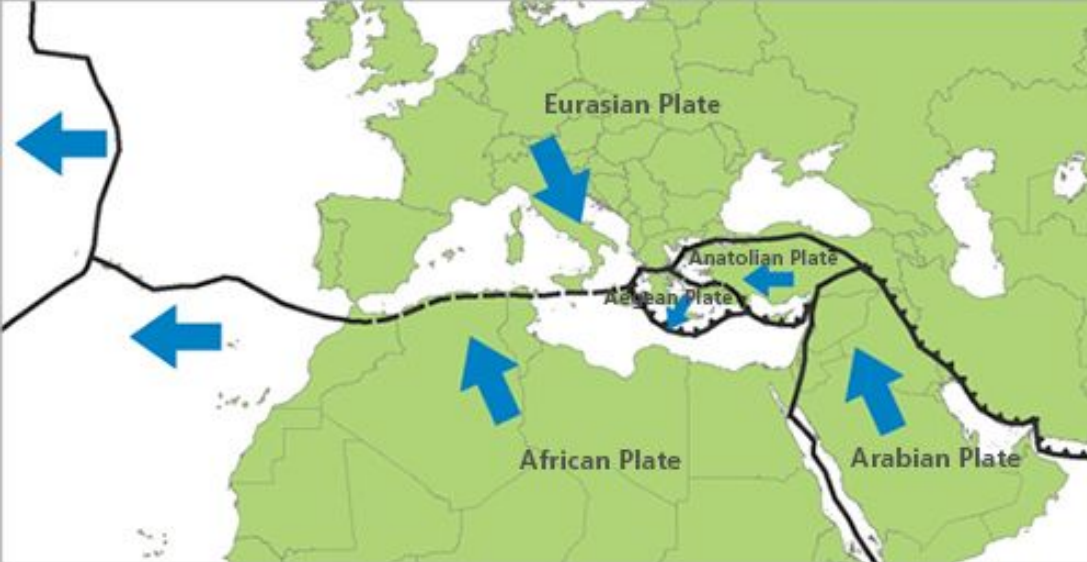
Plate Tectonics:

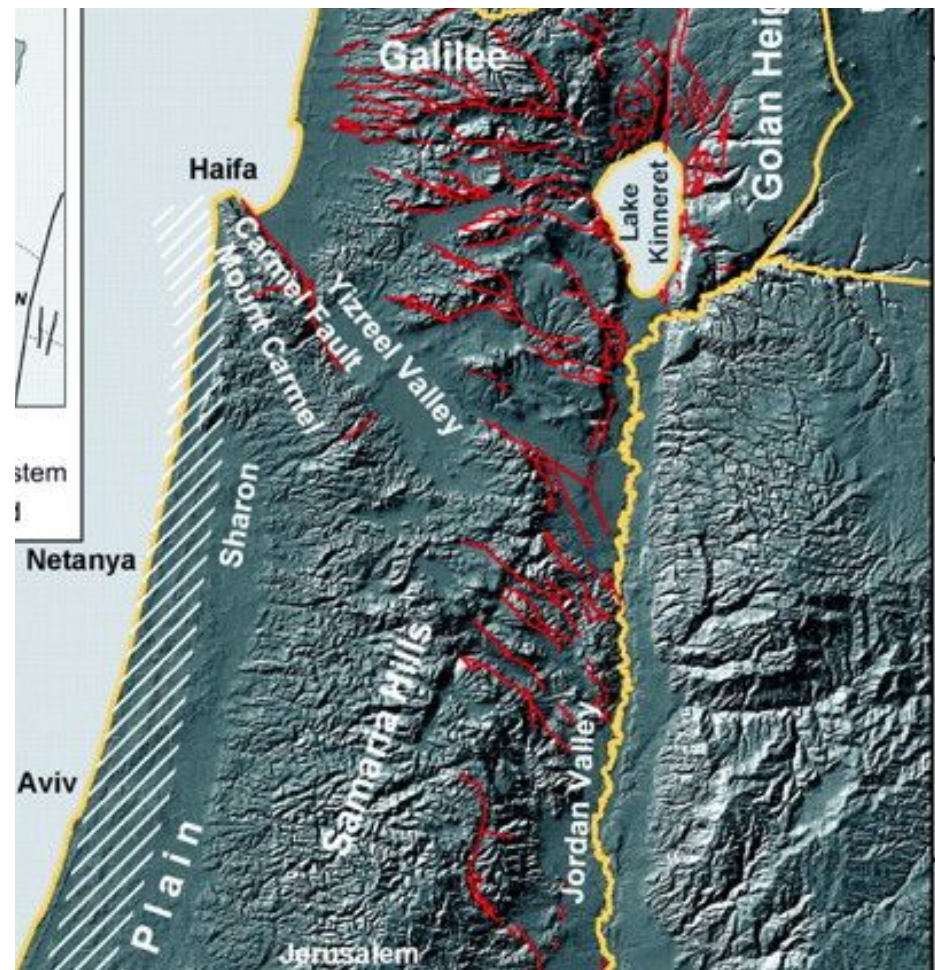
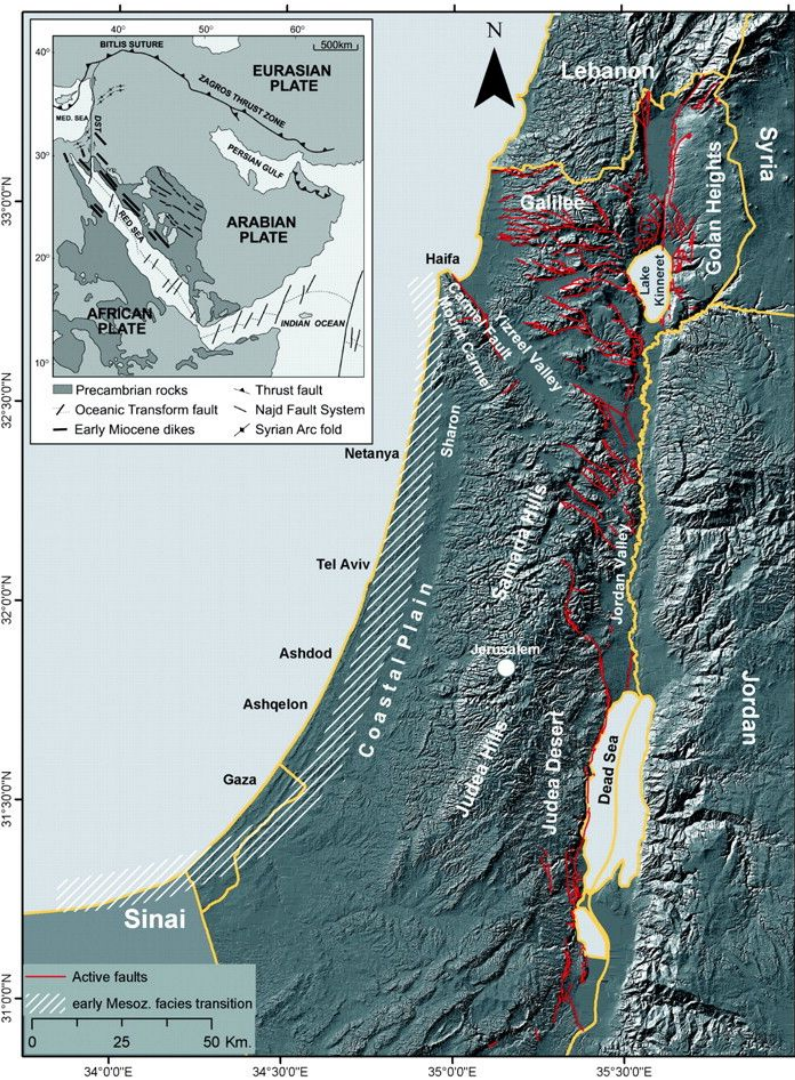
Recycling of Earth's crust = stable atmosphere (temperature & composition)

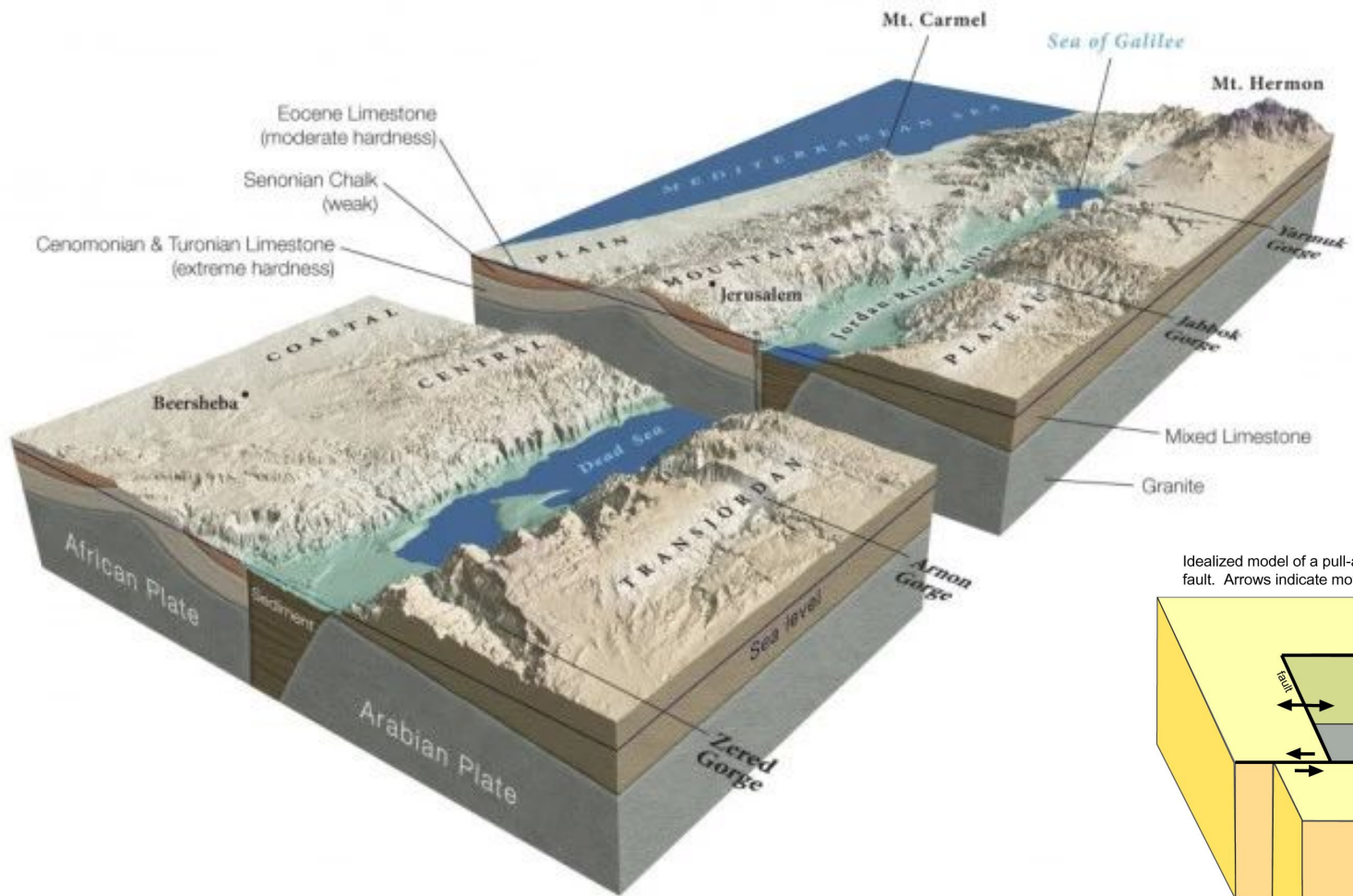
Upwelling = warm oceans with nutrients/chemistry to sustain biodiversity

Oceanic sequestration aided by subduction = prevention of runaway greenhouse effect

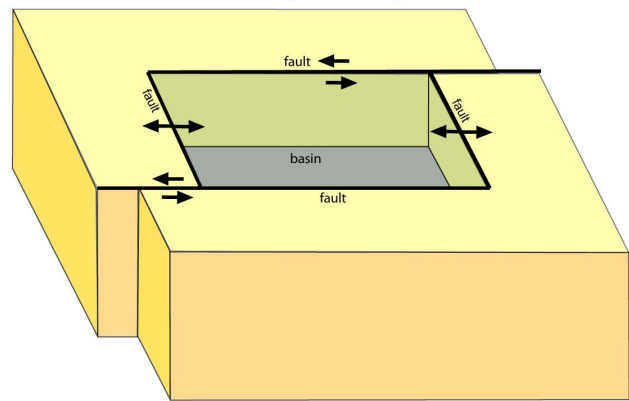








Idealized model of a pull-apart basin as a result of a transform fault. Arrows indicate motion along each fault segment.



High-resolution stratigraphy reveals repeated earthquake faulting in the Masada Fault Zone, Dead Sea Transform

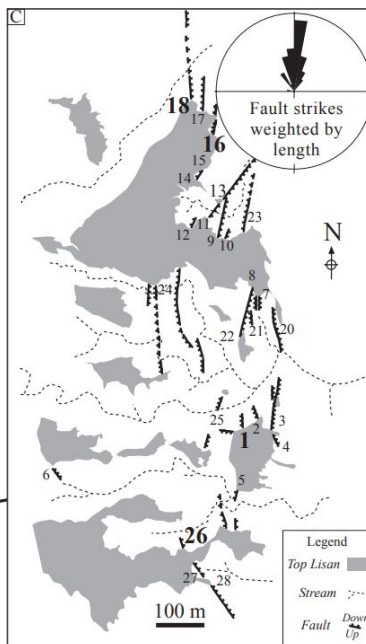
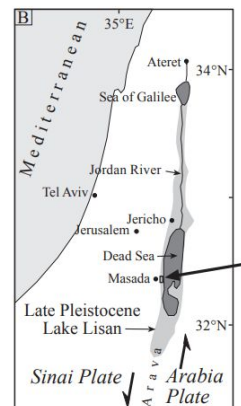
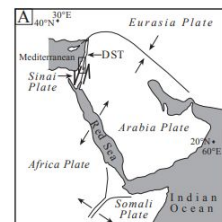
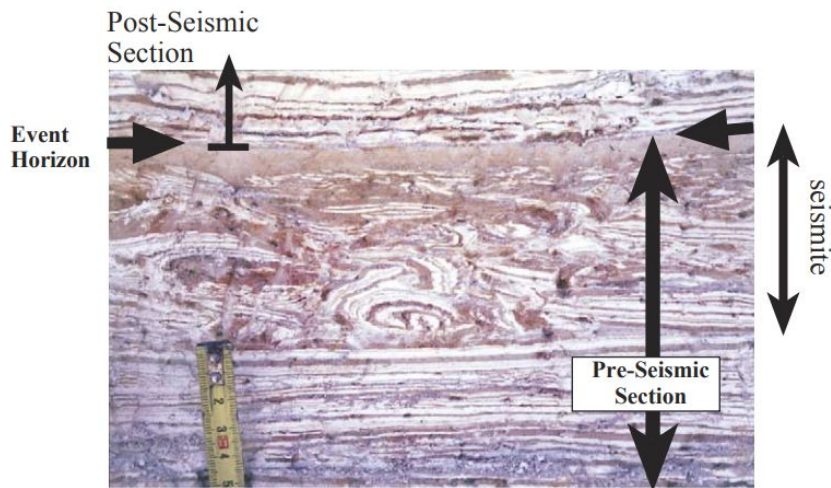
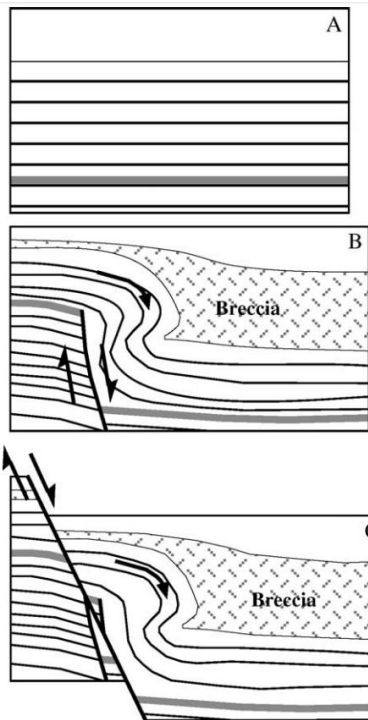
Shmuel Marco ^{a,*}, Amotz Agnon ^b

^a Department of Geophysics and Planetary Sciences, Tel Aviv University, Israel

^b Institute of Earth Sciences, The Hebrew University, Jerusalem, Israel

Received 1 October 2001; accepted 31 May 2005

Available online 19 September 2005



Archaeology

[Prof. Wolfgang Zwickel](#) of the University of Mainz helpfully points out a key archaeological clue to quake versus enemy action. In the case of war, Zwickel says, destruction layers wouldn't necessarily be everywhere. Cities that submissively opened their gates to the marauder would be spared. But if all the cities in a large area evince destruction levels, the likelihood is quake.

Evidence of catastrophe in **eighth-century B.C.E.** northern Israel is legion. A destruction layer at [Hazor](#) was dated by Israel Finkelstein and Yigal Yadin to **760 B.C.E.**, the right time frame for Amos. At [Lachish](#), David Ussishkin found a destruction level from the same time. Acre also has a similar layer dating to the **mid-eighth century B.C.E.** that, Zwickel points out, could have been courtesy of the Assyrians or quake.

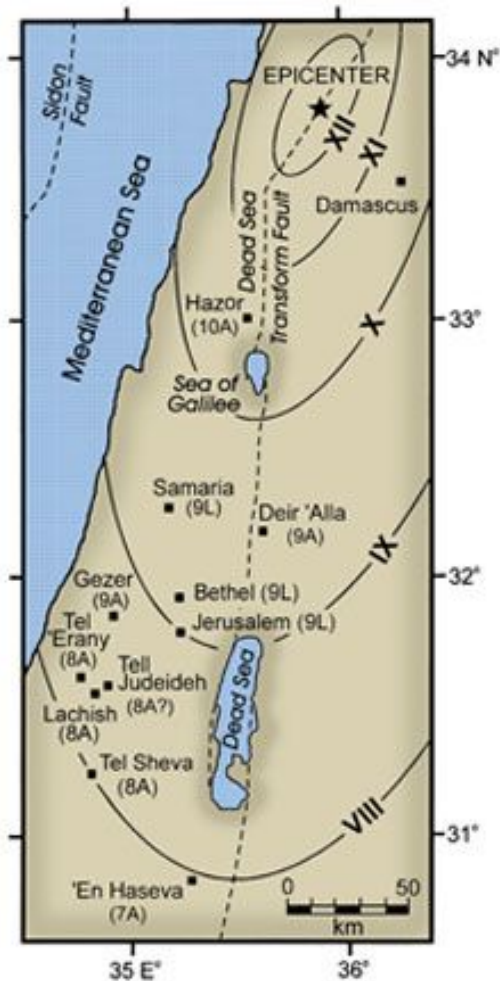
Seismology

[Publishing in Tectonophysics](#), Marco and Agnon,, and Elisa Kagan, present paleoseismic evidence from the Dead Sea area: Cores taken at Ein Gedi and evidence from layered sediment at Ein Feshkha and Nahal Tze'elim (next to [Masada](#)).

Using carbon-14 dating of organic matter in the deformed layers, Kagan dated one quake to **861-705 B.C.E.** and the second to **824-667 B.C.E.**

The words of Amos, who was among the herdsmen of Tekoa, which he saw concerning Israel in the days of Uzziah king of Judah, and in the days of Jeroboam the son of Joash king of Israel, **two years before the earthquake.**

AMOS 1:1



Map showing the locations of damaged cities and the earthquake's probable epicenter.

VIII. Destructive	Damage slight in specially designed structures; considerable in ordinary substantial buildings with partial collapse. Damage great in poorly built structures. Fall of chimneys, factory stacks, columns, monuments, walls. Heavy furniture moved.
IX. Violent	General panic, damage considerable in poorly designed structures, well designed frame structures thrown out of plumb. Damage great in substantial buildings, with partial collapse. Buildings shifted off foundations.
X. Intense	Some well build wooden structures destroyed, most masonry and frame structures destroyed with foundation. Rails bent.
XI. Extreme	Few, if any masonry structures remain standing. Bridges destroyed. Rails bent greatly.
XII. Cataclysmic	Total destruction – everything is destroyed. Lines of sight and level distorted. Objects thrown into the air. The ground moves in waves or ripples. Large amounts of rock move position. Landscape altered, or leveled by several meters. In some cases, even the routes of rivers are changed.

“...appears to be the largest yet documented on the Dead Sea transform fault zone during the last four millennia. The Dead Sea transform fault likely ruptured along more than 400 kilometers as the ground shook violently for over 90 seconds! The urban panic created by this earthquake would have been legendary.”

BY [STEVEN A. AUSTIN, PH.D.](#) *



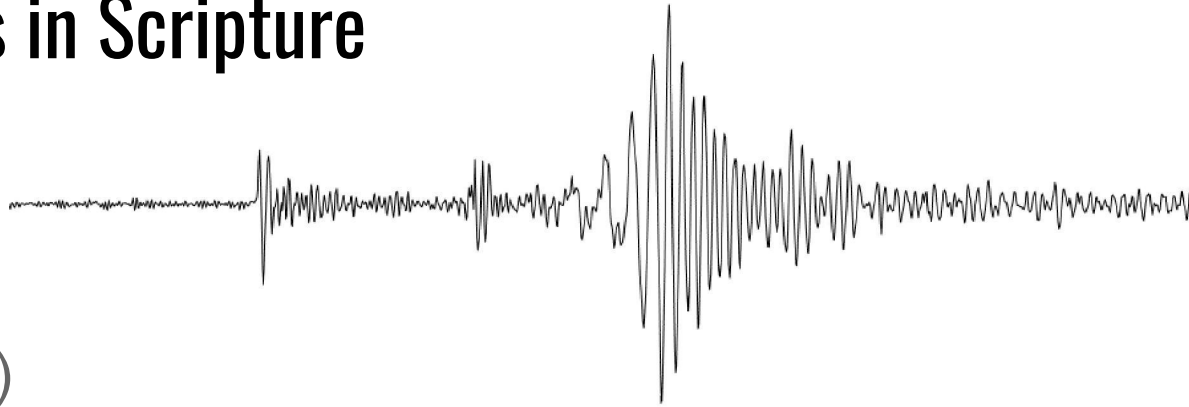
Displaced blocks within the excavation of the outer wall at Gezer.



Leaning wall at Hazor characteristic of Stratum VI.

Historical Earthquakes in Scripture

- Flood (Gen 7:11)
- Sinai (Exo 19:18)
- Korah (Num 16:31)
- Jonathan (1Sa 14:15)
- Elijah (1Ki 19:11)
- Uzziah (Amos 1:1)
- Christ's death (Mat 27:51), and resurrection (Mat 28:2)
- Ecclesial Prayer (Acts 4:31)
- Philippi (Act 16:26)



All miraculous circumstances

The **fear** of the LORD is the beginning of **knowledge**: but fools despise wisdom and instruction.

Proverbs 1:7

And his feet shall stand in that day upon the mount of Olives, which is before Jerusalem on the east, and the mount of Olives shall cleave in the midst thereof toward the east and toward the west, and there shall be a very great valley; and half of the mountain shall remove toward the north, and half of it toward the south. And ye shall flee to the valley of the mountains; for the valley of the mountains shall reach unto Azal: yea, ye shall flee, like **as ye fled from before the earthquake in the days of Uzziah** king of Judah: and the LORD my God shall come, and all the saints with thee.

Zechariah 14:4-5

God's Handiwork

Factor for Life:

Magnetic Field

→ Habitability

→ Reversing Polarity

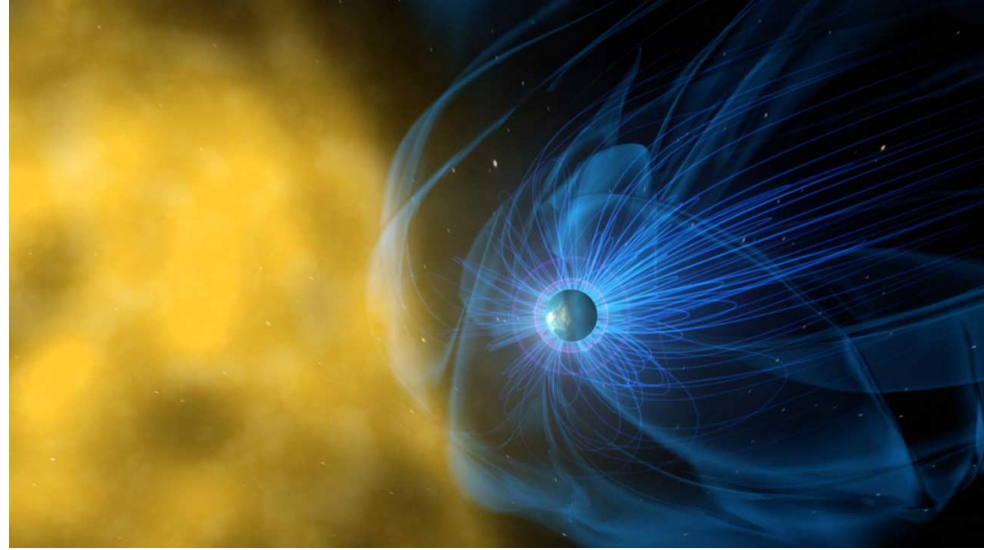
→ Source of Historical Data

→ Pillar of Proof

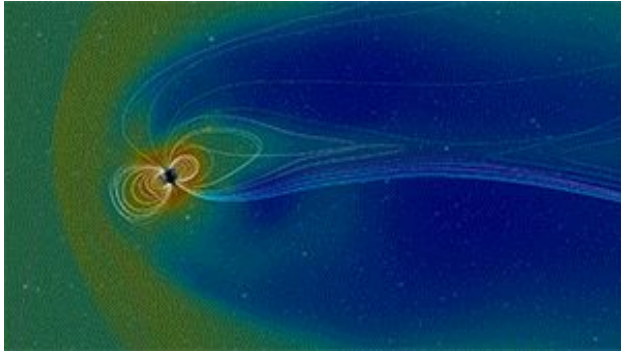
Earth's Magnetosphere

A magnetosphere is the region around a planet dominated by the planet's magnetic field. Other planets in our solar system have magnetospheres, but Earth has the strongest one of all the rocky planets:

The magnetosphere shields our home planet from solar and cosmic particle radiation, as well as erosion of the atmosphere by the solar wind - the constant flow of charged particles streaming off the sun.

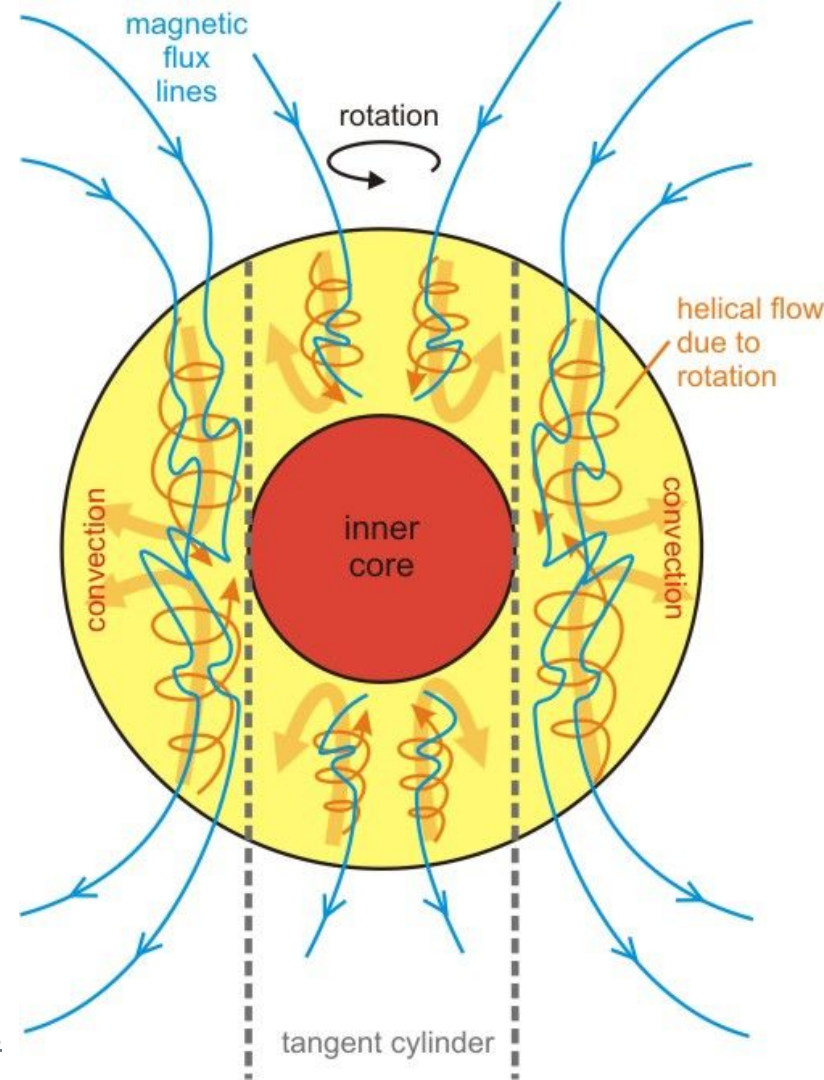


Earth's Magnetosphere:

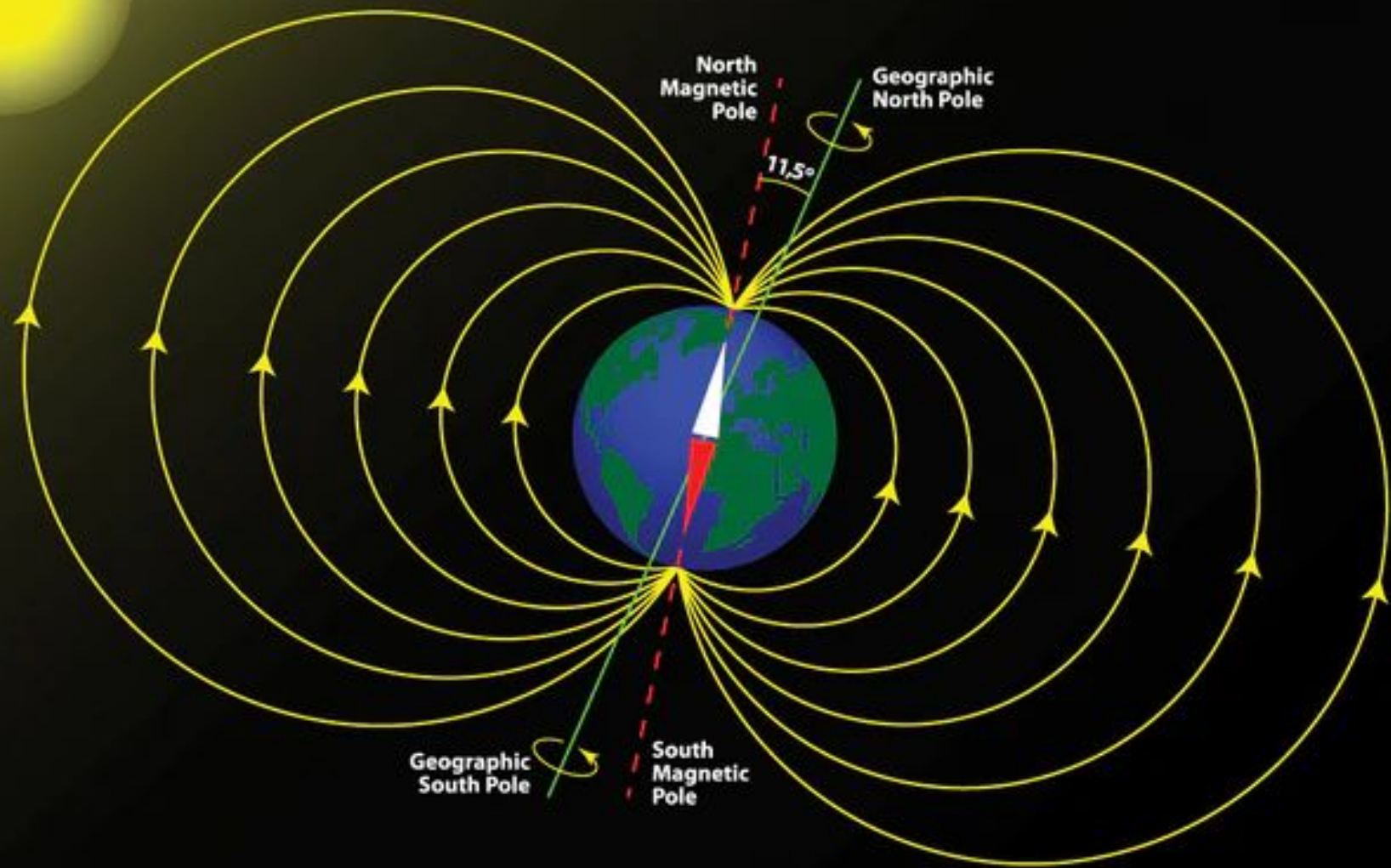


As electrically charged, molten iron churns far below Earth's surface, within the planet's outer core, it generates a magnetic field large enough to extend far out into space. On the Sun-facing side of Earth – where the magnetic field is compressed by the constant bombardment of the solar wind – the magnetosphere extends some 6 to 10 times the radius of Earth.

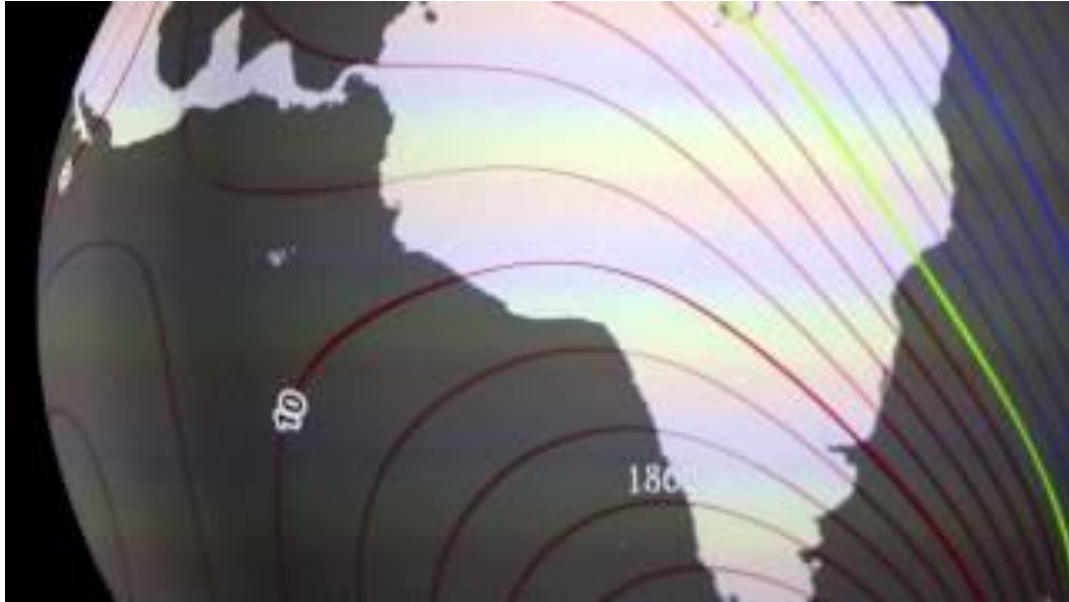
science.nasa.gov/heliophysics





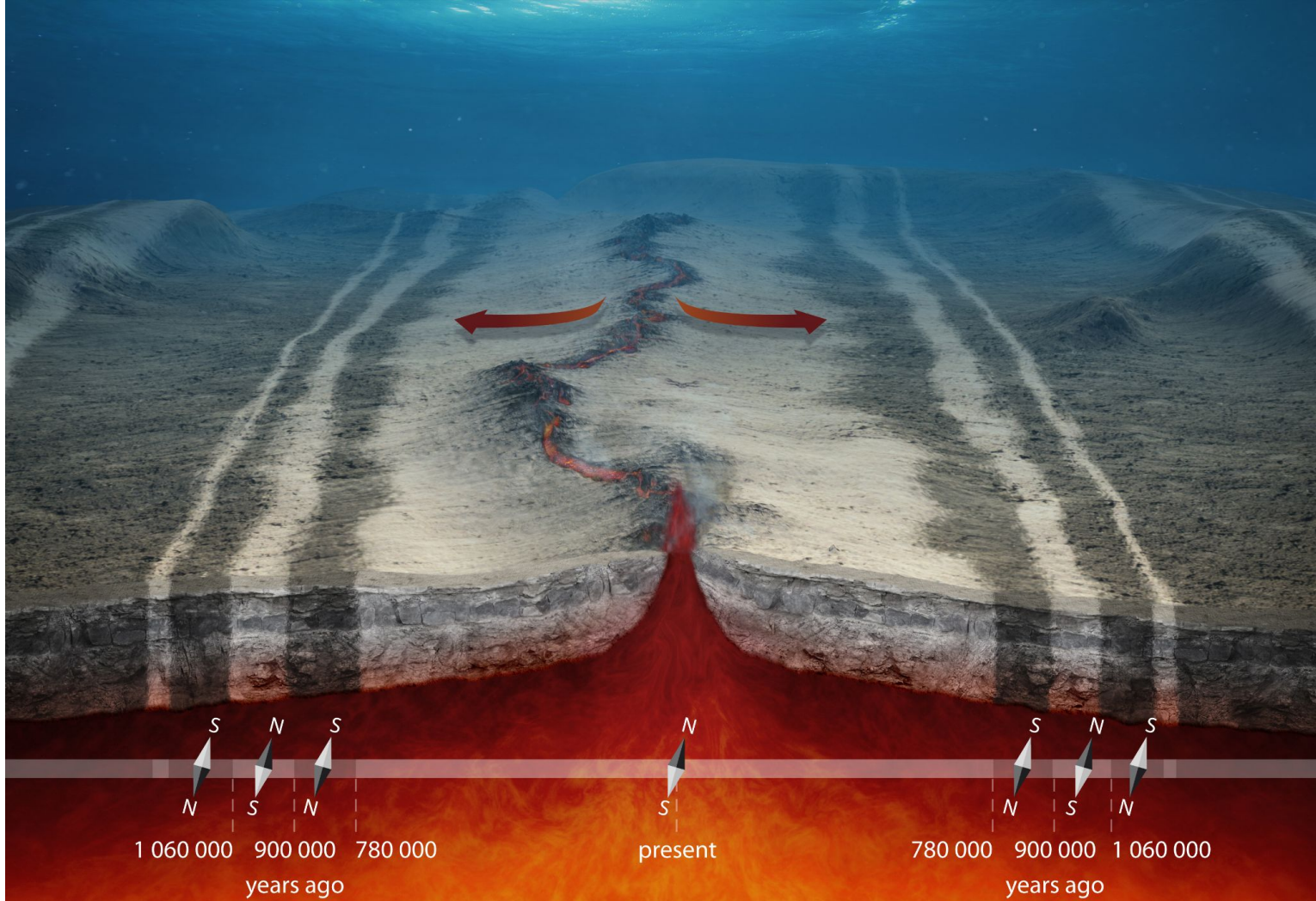


Reversing & Wandering Polarity



What we don't know:

- How the earth's core produces it.
- How and why it fluctuates.
- When the changes will happen.
- How the fluctuations impact earth's atmosphere.





Magnetic Field & Biblical Archaeology

“When magnetic materials are burned or heated they record the precise direction and/or intensity of the Earth’s geomagnetic field at the time of the fire (thermoremanent magnetization). Researchers say they have found this data to be a reliable scientific tool for archeological dating because it makes it possible to reconstruct the magnetic field for particular times in history. Looking at sites where the dates of historical events was already firmly established through various collaborating sources, scientists use the preserved magnetic fields to piece together the timing of other destroyed areas where the dating was more questionable.”



Reconstructing biblical military campaigns using geomagnetic field data

Yoav Vaknin^{a,b,1}, Ron Shaar^b, Oded Lipschits^a, Amihai Mazar^c, Aren M. Maeir^d, Yosef Garfinkel^e, Liora Freud^a, Avraham Faust^e, Ron E. Tappy^f, Igor Kreimerman^c, Saar Ganor^g, Karen Covello-Paran^g, Omer Sergi^a, Zeev Herzog^a, Rami Arav^h, Zvi Lederman^a, Stefan Mungerⁱ, Alexander Fantalkin^a, Seymour Gitinⁱ, and Erez Ben-Yosef^a

Edited by Lisa Tauxe, University of California San Diego, La Jolla, CA; received May 27, 2022; accepted August 31, 2022

The Hebrew Bible and other ancient Near Eastern texts describe Egyptian, Aramean, Assyrian, and Babylonian military campaigns to the Southern Levant during the 10th to sixth centuries BCE. Indeed, many destruction layers dated to this period have been unearthed in archaeological excavations. Several of these layers are securely linked to specific campaigns and are widely accepted as chronological anchors. However, the dating of many other destruction layers is often debated, challenging the ability to accurately reconstruct the different military campaigns and raising questions regarding the historicity of the biblical narrative. Here, we present a synchronization of the historically dated chronological anchors and other destruction layers and artifacts using the direction and/or intensity of the ancient geomagnetic field recorded in mud bricks from 20 burnt destruction layers and in two ceramic assemblages. During the period in question, the geomagnetic field in this region was extremely anomalous with rapid changes and high-intensity values, including spikes of more than twice the intensity of today's field. The data are useful in the effort to pinpoint these short-term variations on the timescale, and they resolve chronological debates regarding the campaigns against the kingdoms of Israel and Judah, the relationship between the two kingdoms, and their administrations.

Significance

Studying the events described in the Hebrew Bible is a complex task that involves textual and archaeological investigation and often bears highly contentious results. Here, we introduce an approach that applies archaeomagnetic investigation to the remains of ancient towns that were destroyed by fire. The new magnetic data provided chronological insights that

Destruction of Jerusalem = time marker

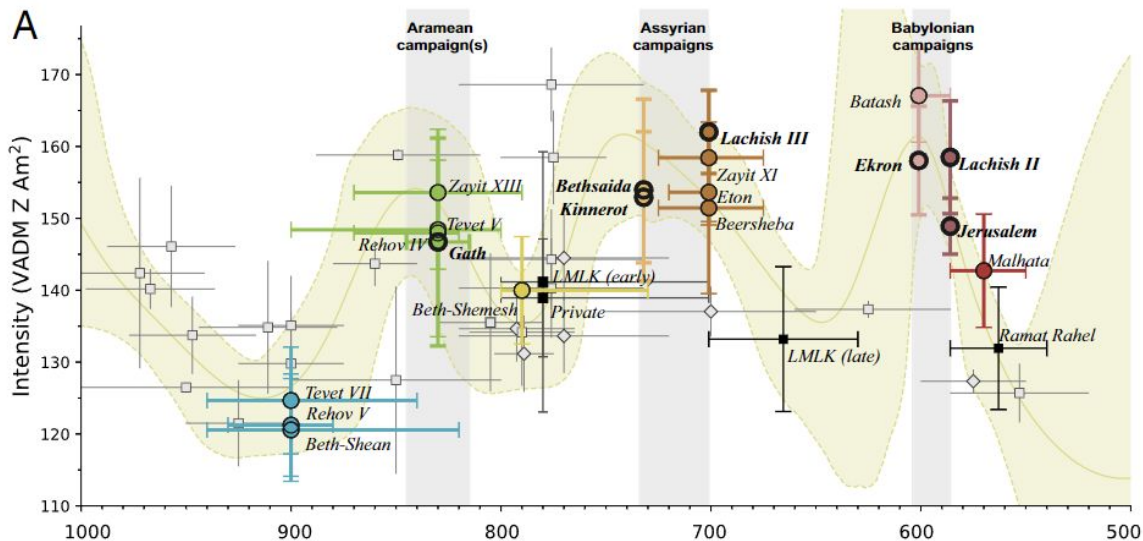


2 Kings 25:9 - And he burnt the house of the LORD, and the king's house, and all the houses of Jerusalem, and every great man's house burnt he with fire.

9th of Av, 586 BC

Tisha B'Av





“the Babylonians were not solely responsible for Judah’s ultimate demise, several decades after they had destroyed Jerusalem and the First Temple, sites in the Negev, which had survived the Babylonian campaign, were destroyed...”

Thus saith the Lord GOD concerning **Edom**;
We have heard a rumour from the LORD, and
an ambassador is sent among the heathen, Arise
ye, and let us rise up against her in battle... For
thy violence against thy brother Jacob shame
shall cover thee, and thou shalt be cut off for
ever.

Obadiah 1 10

That ye may **be mindful of the words**
which were spoken before by the
holy prophets, and of the
commandment of us the apostles of
the Lord and Saviour:

2 Peter 3:2